

# 19" ERATline 500-O

## Safebox Outdoor IP55 Cabinets

**Width: 600 mm**  
**Depth: 300/450/600 mm**



### Production Standards:

- ISO 9001:2015 - Quality Management System
- ISO 14001:2015 - Environmental Management System

### Compliance:

- EN 61587-1 Mechanical structures for electronic equipment - Tests for IEC 60917 and IEC 60297 series
- Climatic and Environment: EN 61587-1/4.2, IEC60068-2-1, IEC60068-2-2, IEC60068-2-30
- Static Mechanical Load Lifting: EN 61587-1/5.2.1
- Static Mechanical Load Stiffness: EN 61587-1/5.2.2
- Dynamic Mechanical Load Vibration and Shock, Impact: EN61587-1/5.3.1, EN61587-1/5.3.3, IEC60068-2-6, IEC60068-2-27
- Earth Bond: EN61587-1/6.2
- Flammability: EN 61587-1/6.3
- Degrees of Protection Provided by Enclosures (Ip Code): IP55
- EN 13501-1+ A1- Epoxy Powder coated compliant to Fire classification of construction products and building elements Part 1: Classification using data from reaction to fire tests
- Epoxy Powder coating tested as per EN ISO 9227 and ASTM B 117 Corrosion tests in artificial atmospheres - Salt spray tests; minimum 1000 hours
- EN ISO 2409 Paints and varnishes - Cross-cut test
- EN ISO 2178 Non-magnetic coatings on magnetic substrates
- Measurement of coating thickness - Magnetic method
- RoHS Compliancy according to 2011/65/EU
- CE Compliant to EN 60950-1



**Wall mounted maximum load capacity up to 300 kg.**



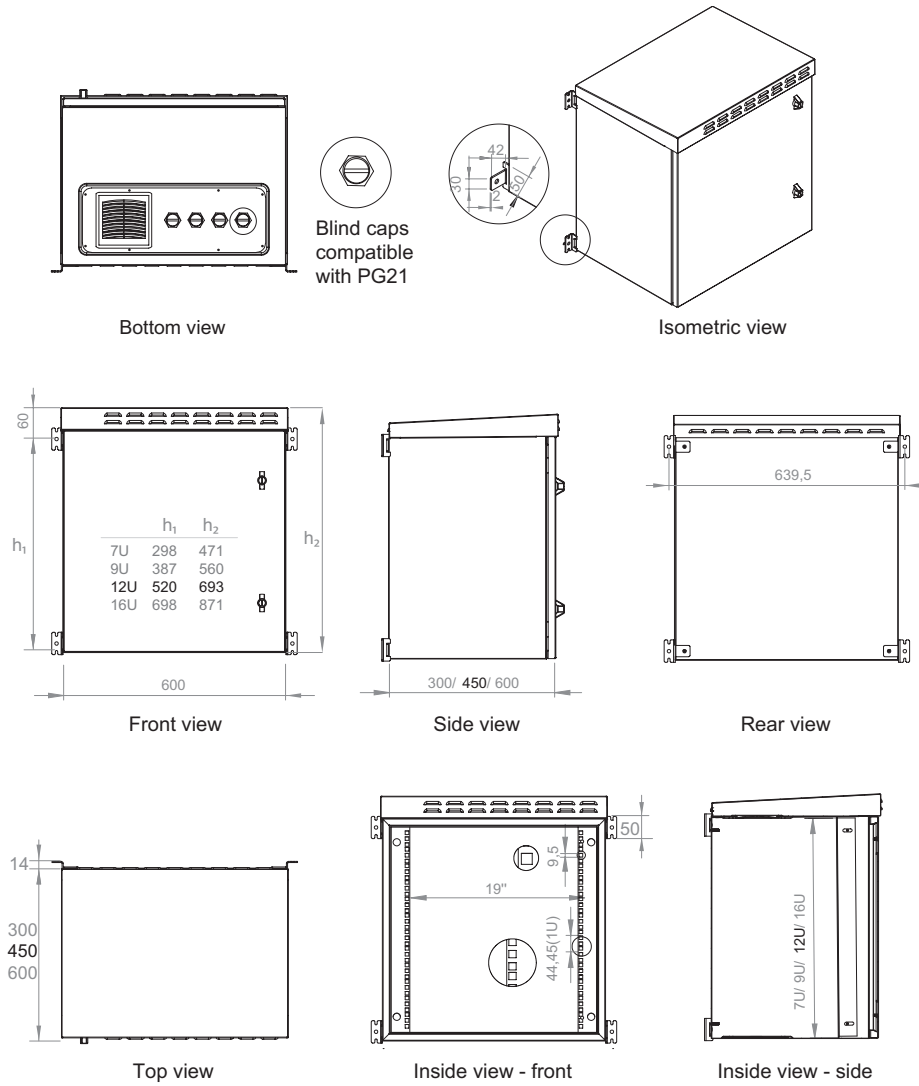
### ERATline 500-O Series Safebox Outdoor IP55 Cabinets 7U/9U/12U/16U W600 x D300/450/600 mm

- Mono-block welded construction, coated with polyester type powder, on RAL 7035 - Light Grey.
- 7U - 9U have one key-locking quarter-turn wing knob, 12U - 16U have two key-locking quarter-turn wing knobs.
- 1 set of 19" front equipment mounting rails.
- 4 x PG21 cable entries blind plugs.
- The safebox has one filtered air inlet and a filtered passive ventilation and hot air exhaust. Where required the filterers can be replaced with an exhaust fan or an an exhaust fan with thermostat (optional accessories).
- Wall mounting brackets and grounding cable are included.
- The metallic door has polyurethane sealing gasket compatible with EN 60529 IP54/IP55 code protection. IP code can be upgraded up to IP66 by replacing the fan ventilation slots with cover plates.
- The maximum load capacity is up to 300 kg as a wall mounted and up to 800 kg as a free standing.
- Safebox can be floor mounted when using a plinth. Also it can be pole mounted on 4-6" poles with the Lande pole mounted kit (optional accessory).
- An optional rear mounting plate can be used to host industrial or electrical equipment that can not be mounted on 19" rails (optional).

# 19" ERATline 500-O

## Safebox Outdoor IP55 Cabinets

Width: 600 mm  
Depth: 300/450/600 mm



19" ERATline 500-O Safebox Outdoor IP55 W600 x D300 mm Cabinets		
Dimensions WxDxH mm	Package Size WxDxH mm	Product Description
600x300x471	650x350x487	7U 19" W600 x D300 mm Outdoor IP55 Cabinet
600x300x560	650x350x576	9U 19" W600 x D300 mm Outdoor IP55 Cabinet
600x300x693	650x350x709	12U 19" W600 x D300 mm Outdoor IP55 Cabinet
600x300x871	600x350x887	16U 19" W600 x D300 mm Outdoor IP55 Cabinet

19" ERATline 500-O Safebox Outdoor IP55 W600 x D450 mm Cabinets		
Dimensions WxDxH mm	Package Size WxDxH mm	Product Description
600x450x471	650x500x487	7U 19" W600 x D450 mm Outdoor IP55 Cabinet
600x450x560	650x500x576	9U 19" W600 x D450 mm Outdoor IP55 Cabinet
600x450x693	650x500x709	12U 19" W600 x D450 mm Outdoor IP55 Cabinet
600x450x871	600x500x887	16U 19" W600 x D450 mm Outdoor IP55 Cabinet

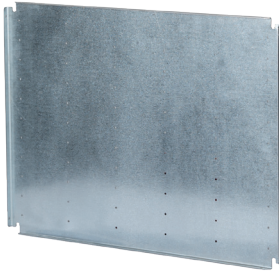
19" ERATline 500-O Safebox Outdoor IP55 W600 x D600 mm Cabinets		
Dimensions WxDxH mm	Package Size WxDxH mm	Product Description
600x600x471	650x650x487	7U 19" W600 x D600 mm Outdoor IP55 Cabinet
600x600x560	650x650x576	9U 19" W600 x D600 mm Outdoor IP55 Cabinet
600x600x693	650x650x709	12U 19" W600 x D600 mm Outdoor IP55 Cabinet
600x600x871	600x650x887	16U 19" W600 x D600 mm Outdoor IP55 Cabinet

# 19" ERATline 500-O Safebox Outdoor IP55 Cabinets Accessories



## Fan Module with Analog Thermostat Switch - 220 V AC

Product Model	Dimensions WxDxH mm	Description
Accessory	495x175x50	Single fan module with analog thermostat switch, filtered
Accessory	495x175x50	Double fan module with analog thermostat switch, filtered



## Mounting Plates for ERATline 500 Safebox Cabinets

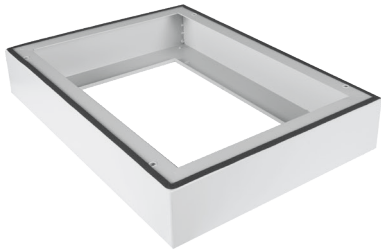
Product Model	Dimensions WxDxH mm	Description
Accessory	t: 1 mm H:350 mm W:575 mm	7U Mounting Plate- Galvanized
Accessory	t: 1 mm H:400 mm W:575 mm	9U Mounting Plate- Galvanized
Accessory	t: 1 mm H:570 mm W:575 mm	12U Mounting Plate- Galvanized
Accessory	t: 1 mm H:748 mm W:575 mm	16U Mounting Plate- Galvanized

To be mounted on the internal surface of the rear panel of the cabinet. Allows industrial components, electrical components and DIN rails mounting.



## Pole Mounting Kit

Product Model	Dimensions WxDxH mm	Description
Accessory	598x204x80	Pole mounting kit, for 4-6" diameter poles, galvanized



## Floor Mounting Applications

Product Model	Dimensions WxDxH mm	Description
Accessory	600x300x100	Plinth H:100 mm W:600 x D300 RAL 7035 Light Grey
Accessory	600x450x100	Plinth H:100 mm W:600 x D450 RAL 7035 Light Grey
Accessory	600x600x100	Plinth H:100 mm W:600 x D600 RAL 7035 Light Grey